



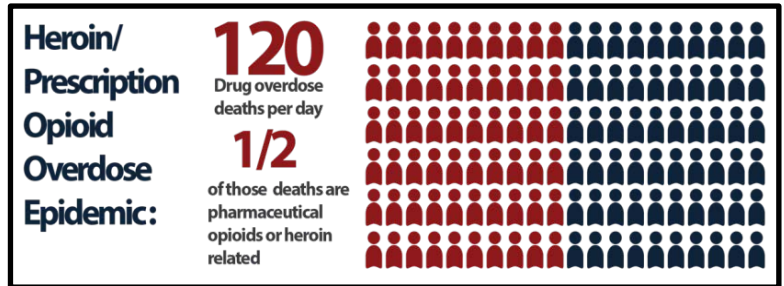
# DEA 360 Strategy

*Working Together to Break the Cycle of Drug Trafficking, Drug Violence, and Drug Abuse*

## What is DEA 360?

A comprehensive approach tackling the cycle of violence and addiction generated by the link between drug cartels, violent gangs, and the rising problem of prescription opioid and heroin abuse in U.S. cities. DEA 360 involves:

- Coordinated **Law Enforcement** operations targeting all levels of drug trafficking organizations and violent gangs supplying drugs to our neighborhoods
- Engaging drug manufacturers, wholesalers, practitioners, and pharmacists through **Diversion Control** to increase awareness of the opioid epidemic and encourage responsible prescribing practices, and use of opioid painkillers throughout the medical community
- **Community Outreach** and partnership with local organizations following enforcement operations, equipping and empowering communities to fight the opioid epidemic



## National Partners with Local Reach:

- U.S. Attorney's Office - Pittsburgh
- Boys & Girls Clubs of America
- Community Anti-Drug Coalitions of America
- DEA Educational Foundation
- DOJ – Violence Reduction Network
- The Elks Club
- HHS - Substance Abuse and Mental Health Services Administration
- White House Office of National Drug Control Policy
- Partnership for Drug-Free Kids

## Goals:

- Stopping the deadly cycle of heroin and opioid pill abuse by eliminating drug trafficking organizations and gangs fueling violence on the streets and cycles of addiction in our communities
- Partnering with the medical community and others to raise awareness of the dangers of prescription opioid misuse and the link to heroin
- Strengthening community organizations best positioned to provide long-term help and support for building drug-free communities



For more information: Contact DEA Public Affairs at (202) 307-7977

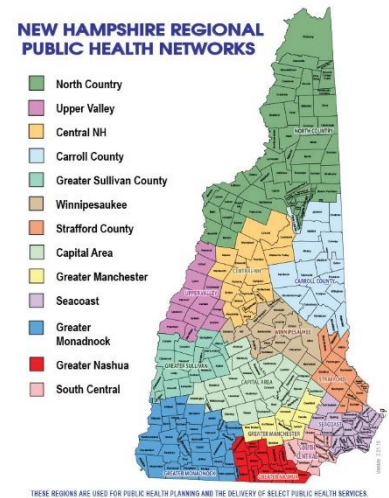


# Greater Manchester Public Health Network

*Teaming up to enhance our prevention efforts at the local, state and federal levels utilizing a collective action, collective impact model.*

## What is MAKIN' IT HAPPEN (MIH) and the GREATER MANCHESTER PUBLIC HEALTH NETWORK?

MIH in partnership with the Manchester Health Department are the regional agencies coordinating the implementing of the Substance Misuse Prevention strategy for the Greater Manchester region under the NH Public Health Network system. In addition, we are facilitating the rollout of the Substance Use Disorder Continuum of Care initiative for the region. The Greater Manchester region includes the communities of: **Auburn, Bedford, Candia, Deerfield, Goffstown, Hooksett, Manchester and New Boston**, with a combined population of approximately 190k. This work strives to engage participation and leadership from our core community sectors: Business, Government, Health, Safety/Law Enforcement, Education and Community/family. All efforts are routed in the believe that: **BEHAVIORAL HEALTH IS ESSENTIAL. PREVENTION WORKS. TREATMENT IS EFFECTIVE. PEOPLE RECOVER.**



## Greater Manchester Public Health Network/Makin' It Happen mission statement:

*To create a coordinated response among individuals, organizations businesses and communities to promote behaviors that measurably improve the overall health and well-being of our youth, families and communities with a focus on alcohol, tobacco and other drug prevention.*

## Substance Misuse Prevention strategy goals:

- Cultivate expanded leadership throughout the region
- Increase public awareness relative to the harm and consequences of substance misuse
- Increase trainings, technical assistance and professional development resources designed to develop and expand knowledge and skills relative to recognizing and addressing substance misuse
- Increase data collection and analysis to inform our work
- Promote the implementation of effective policies, practices and programs throughout the region
- Decrease opioid misuse across the lifespan
- Decrease alcohol use and binge drinking among our youth and young adults
- Decrease marijuana use among our youth

## Substance Use Disorder Continuum of Care:

*The vision of the Greater Manchester Region is to have a comprehensive, integrated, accessible and responsive Substance Use Disorder Continuum of Care that promotes the health of our communities.*

This initiative is in year one of a statewide rollout and is currently focused on the development of workgroups assembled to take a concentrated review of the gaps identified through an assets and gaps analysis developed early in 2016. These workgroups meet regularly to move forward priority actions. Regional partners include providers across Behavioral and Physical Health, Prevention, Intervention, Treatment and Recovery.

The DEA 360 Strategy is an exciting opportunity to **enhance the ongoing and sustainable work** of Makin' It Happen and the Greater Manchester Regional Public Health Network. The groundwork has been laid in our region and strong partnerships exist across **healthcare, prevention, intervention, treatment and recovery** that will be built upon and expanded.

**Quick cross walk on how the DEA 360 initiative elements link and support the current regional Substance Misuse Prevention goals:**

Substance Misuse Prevention Goals	DEA youth dance program	Media campaign	Prevention training	Youth Leadership project	Community summit
Cultivate expanded leadership throughout the region	✓	✓	✓	✓	✓
Increase public awareness relative to the harm and consequences of substance misuse	✓	✓	✓	✓	✓
Increase trainings, technical assistance and professional development resources designed to develop and expand knowledge and skills relative to recognizing and addressing substance misuse		✓	✓	✓	✓
Increase data collection and analysis to inform our work	✓	✓	✓	✓	✓
Promote the implementation of effective policies, practices and programs throughout the region	✓	✓	✓	✓	✓
Decrease opioid misuse across the lifespan		✓	✓	✓	✓
Decrease alcohol use and binge drinking among our youth and young adults		✓	✓	✓	✓
Decrease marijuana use among our youth		✓	✓	✓	✓

**For more information on these initiatives and to check in on upcoming events, please go to:**

[www.makinithappen.org](http://www.makinithappen.org)

**Greater Manchester Regional Community Resource Guide for Substance Use Disorder:**

[www.communitycompassgmr.org](http://www.communitycompassgmr.org)